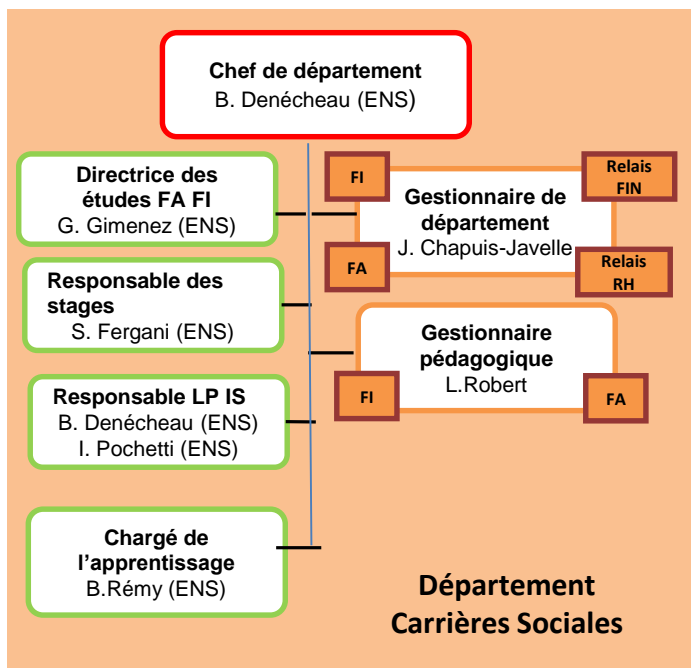
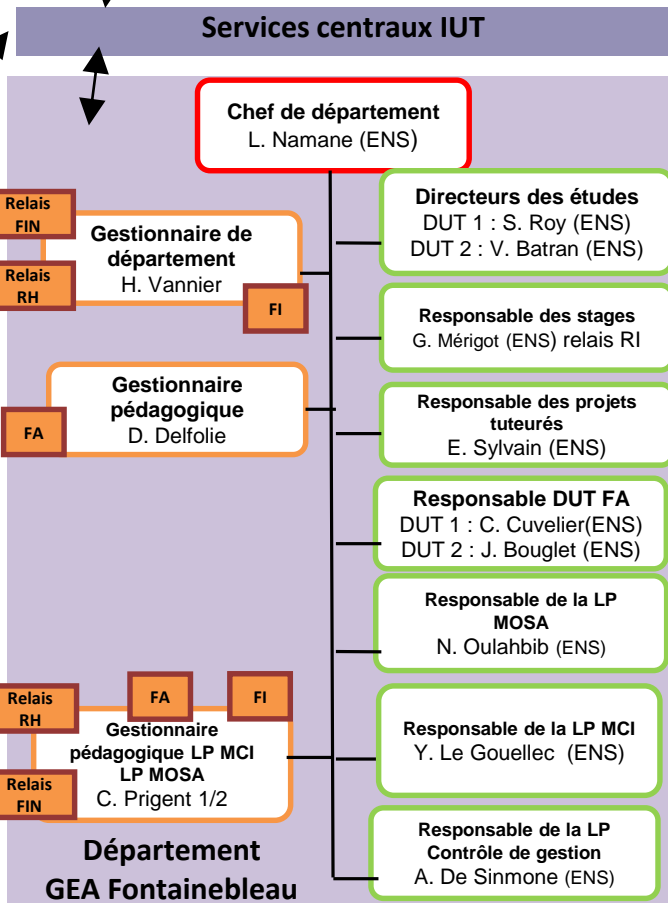
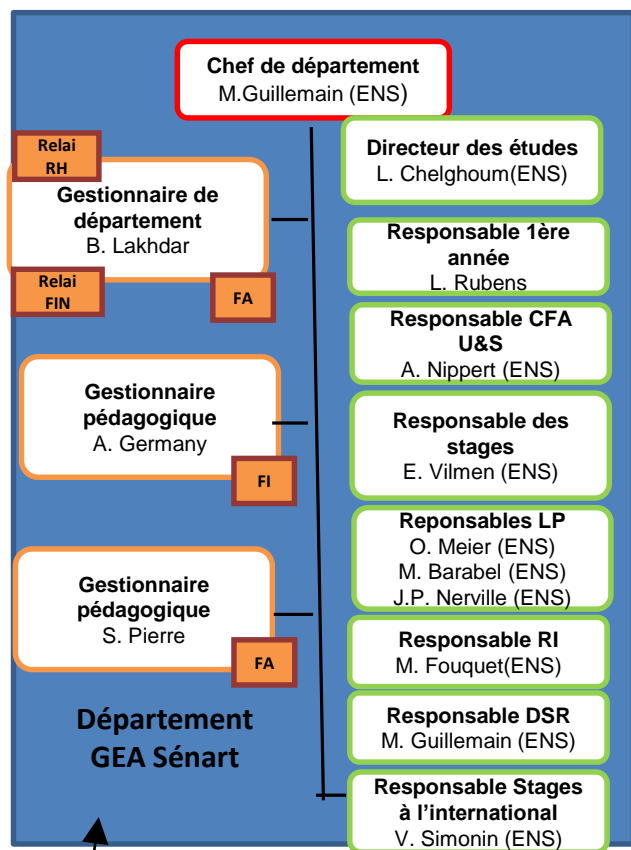
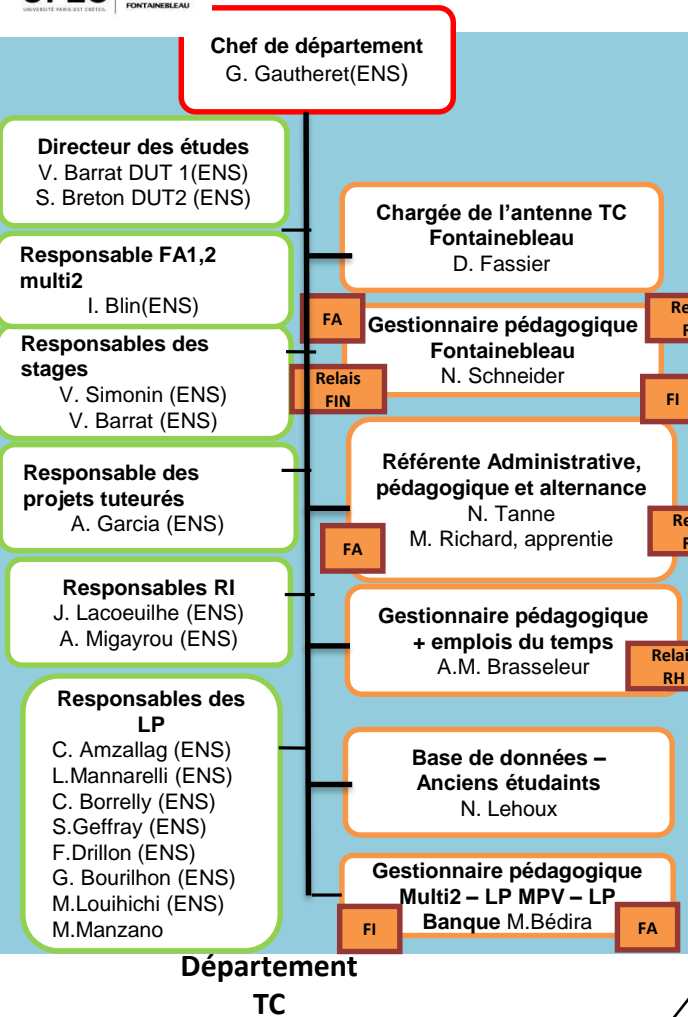
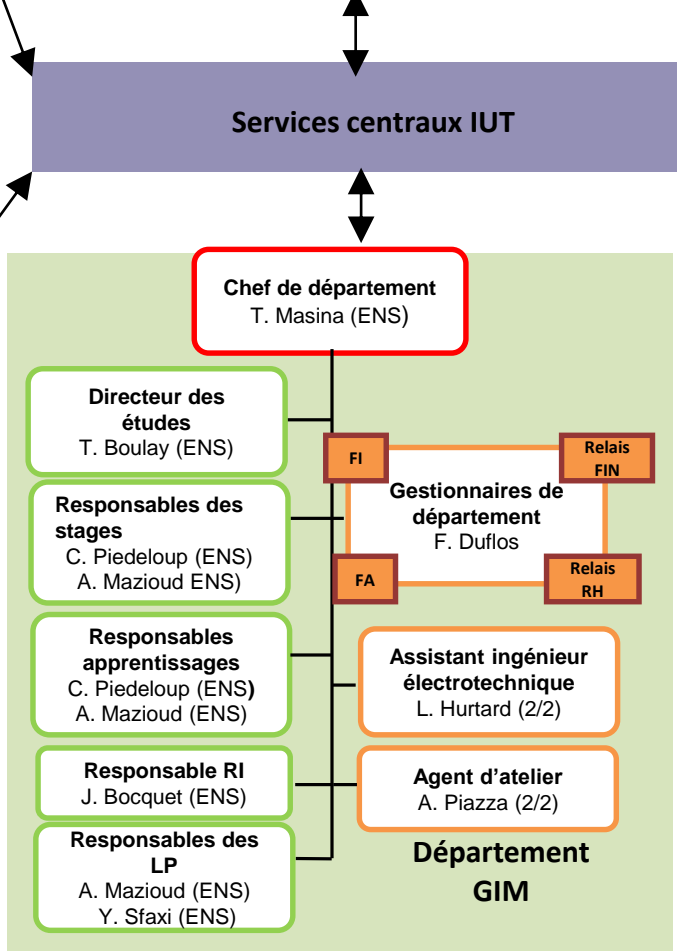
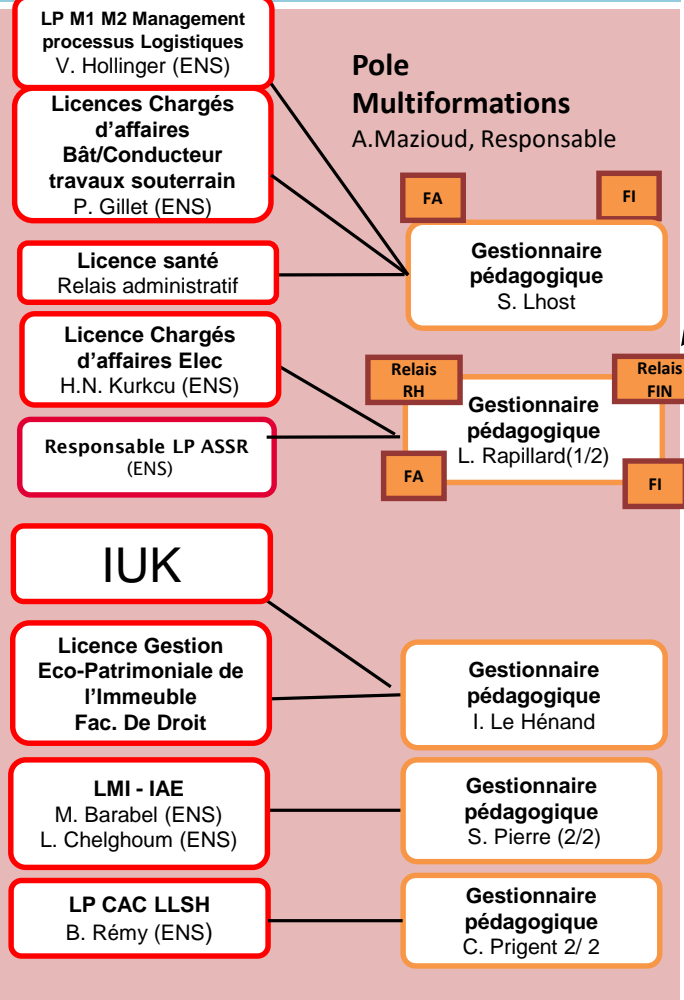
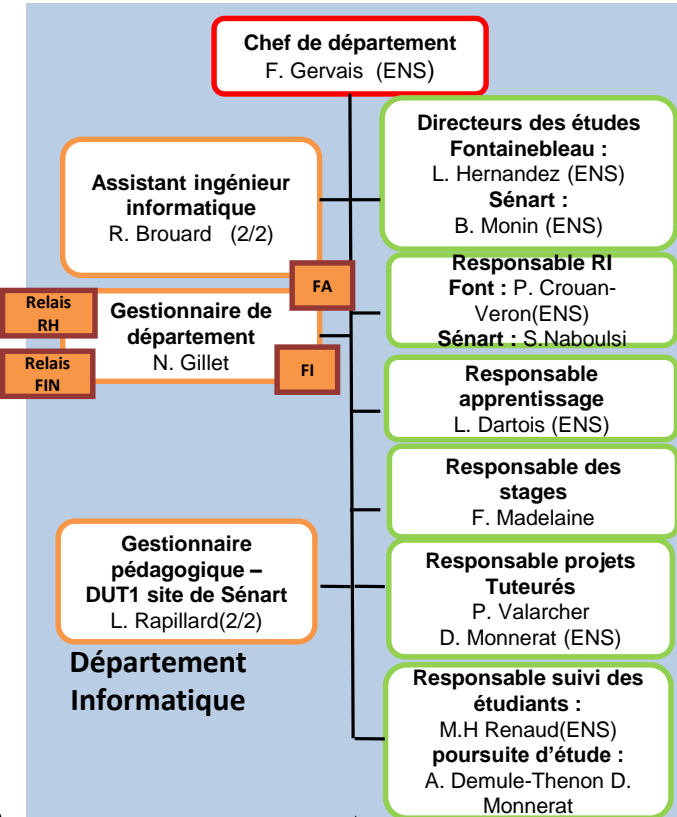
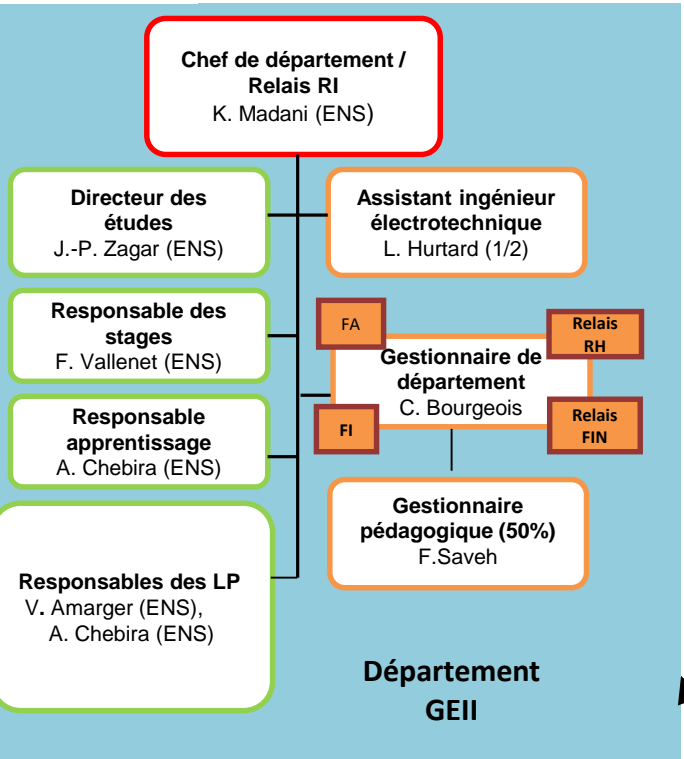
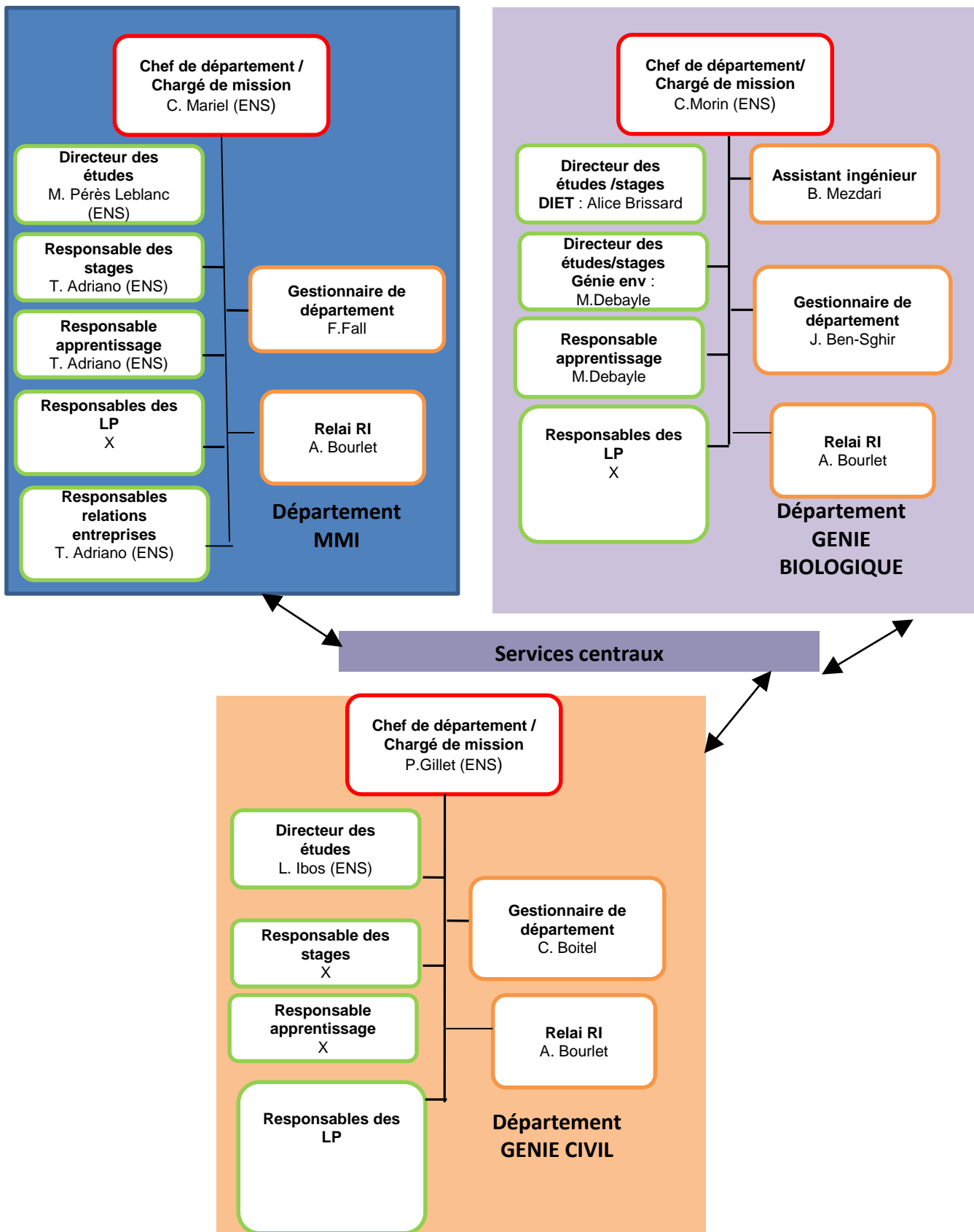













Organigramme de l'IUT Sénart Fontainebleau 2020/2021







-  Gestion de groupes en formation initiale
-  Gestion de groupes en formation en apprentissage
-  Gestion de groupes en formation continue
-  Relais financier (commandes Sifac)
-  Relais ressources humaines (dossiers vacataires)
-  Lien fonctionnel entre les services centraux et les départements
-  Lien fonctionnel
-  Lien hiérarchique
-  Enseignant occupant une fonction de direction/chef de département
-  Enseignant occupant une fonction administrative
-  Personnel BIATSS

RI : Relations internationales / DSR : Devoirs surveillés de remplacement

Légende