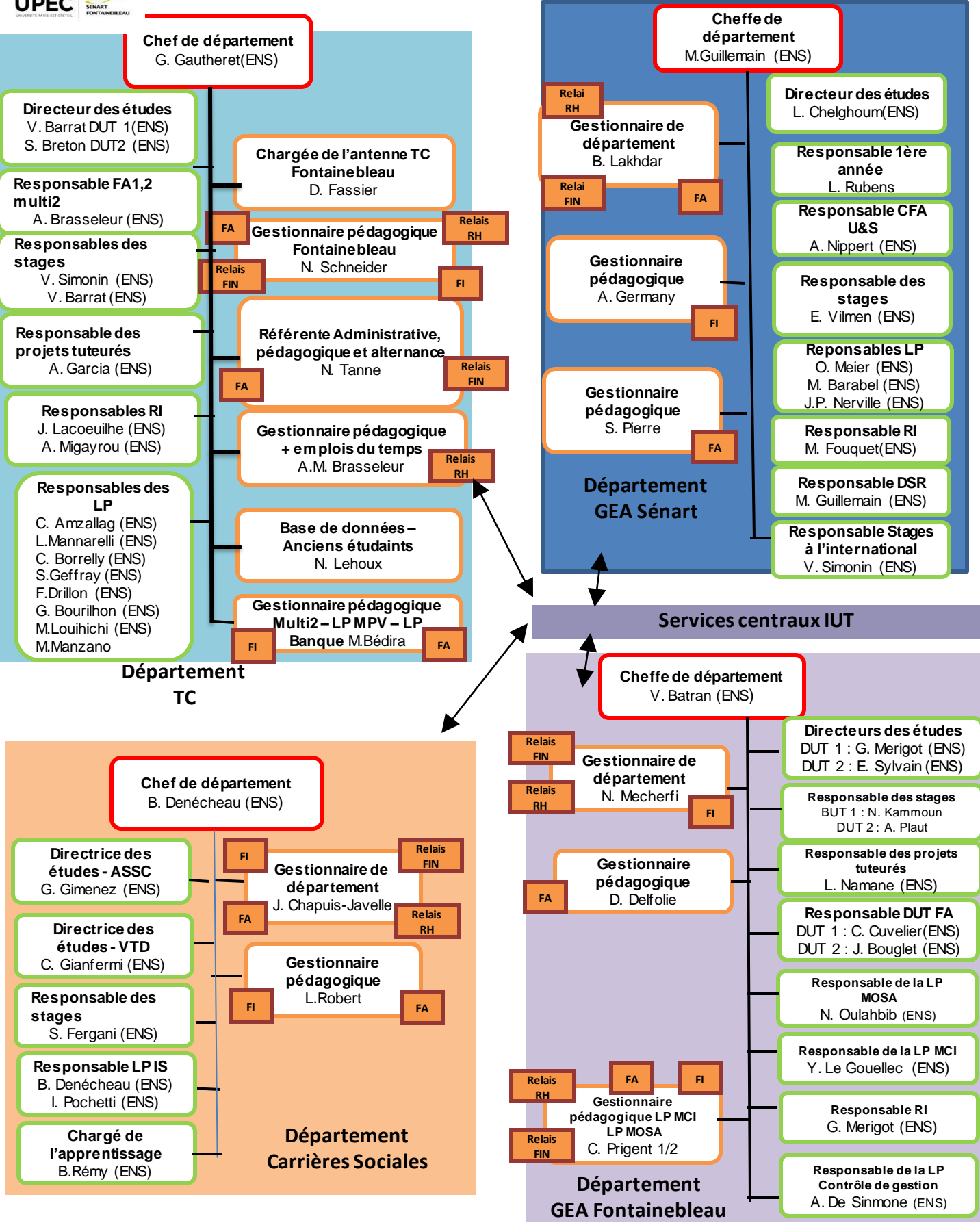
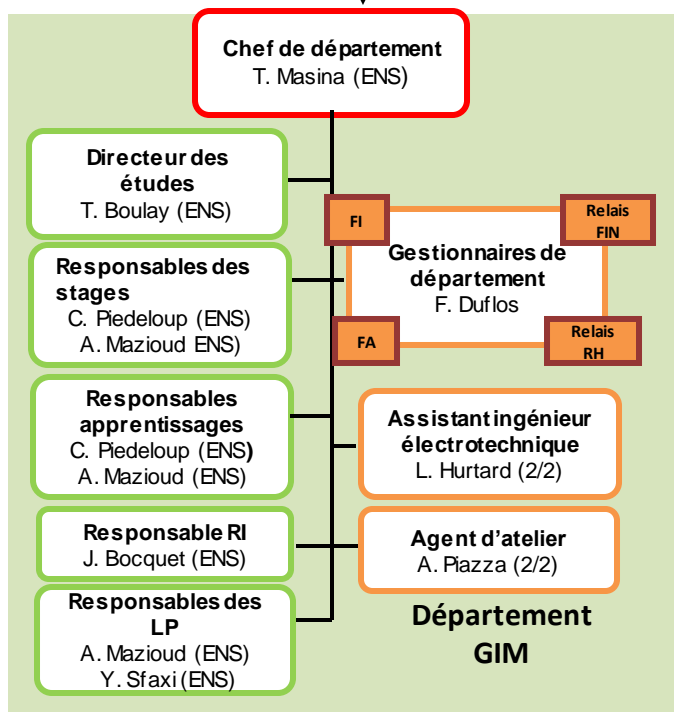
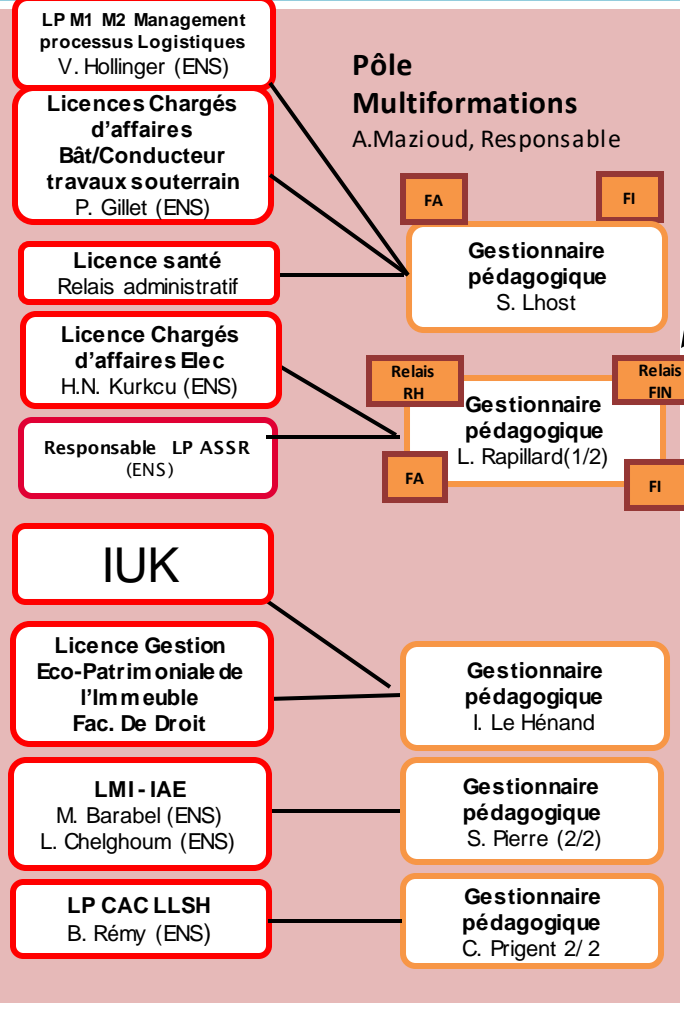
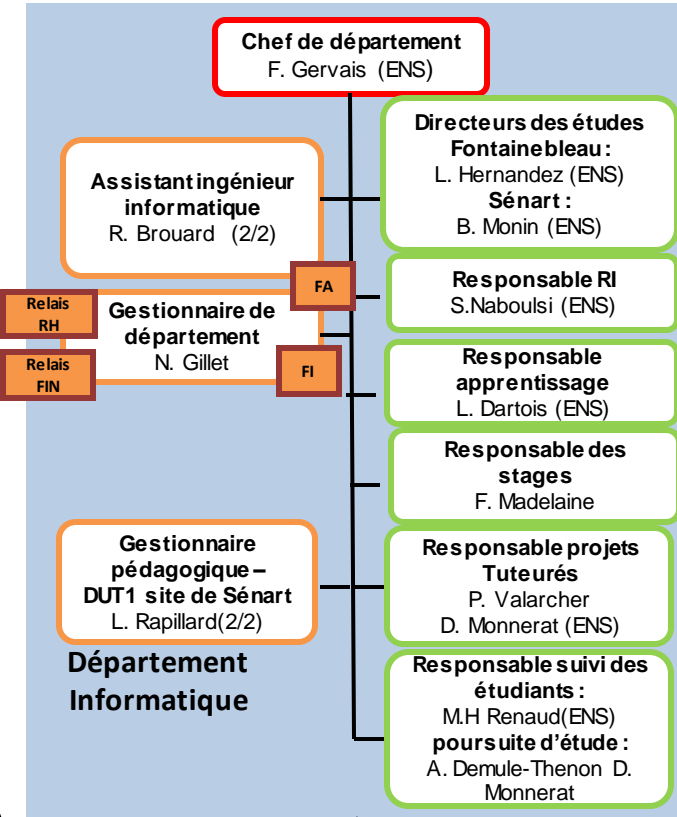
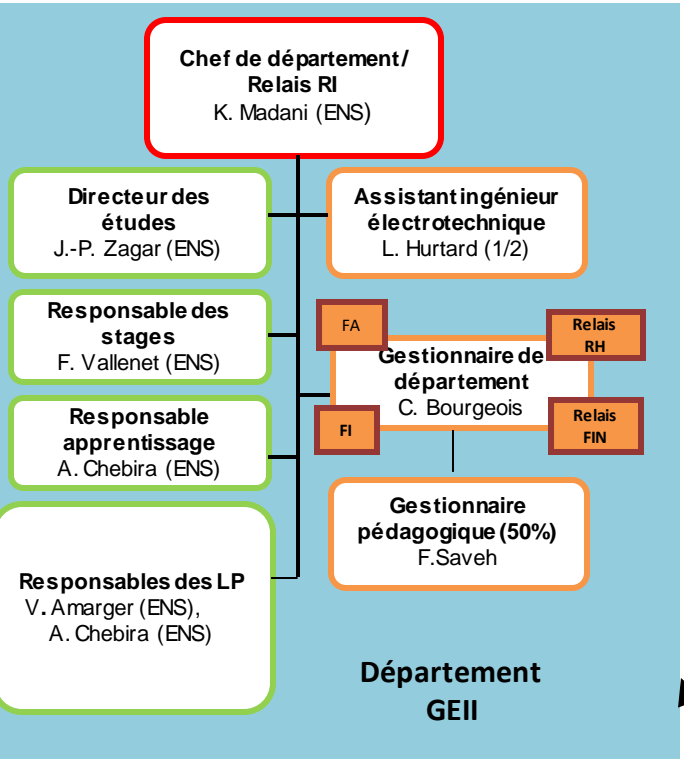
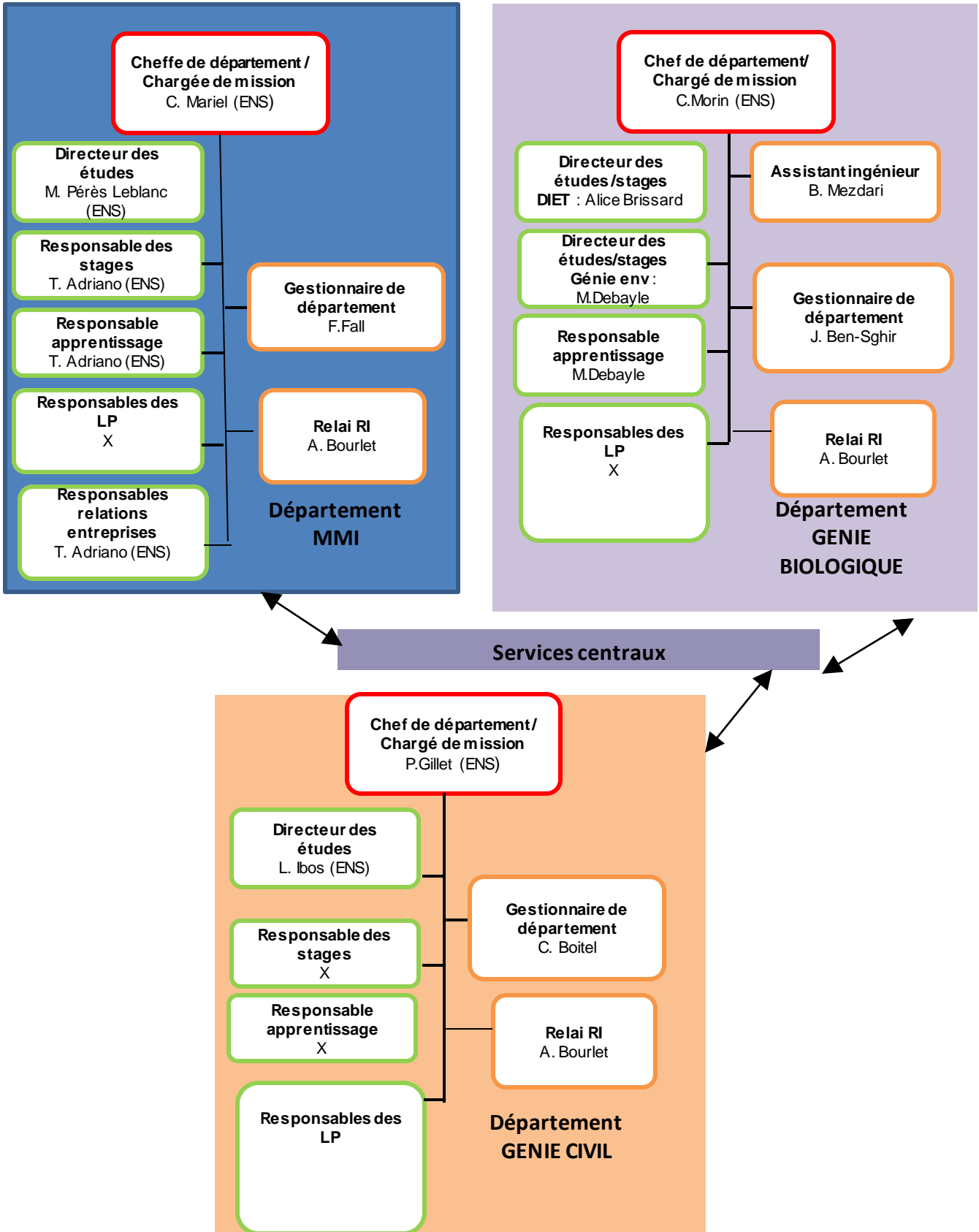


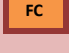
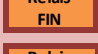






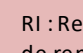


# Organigramme de l'IUT Sénart Fontainebleau 2021/2022







	Gestion de groupes en formation initiale
	Gestion de groupes en formation en apprentissage
	Gestion de groupes en formation continue
	Relais financier (commandes Sifac)
	Relais ressources humaines (dossiers vacataires)
	Lien fonctionnel entre les services centraux et les départements
	Lien fonctionnel
	Lien hiérarchique
	Enseignant occupant une fonction de direction/chef de département
	Enseignant occupant une fonction administrative
	Personnel BIATSS

RI : Relations internationales / DSR : Devoirs surveillés de remplacement

## Légende